

# The Java Platform Web Applications

# The Java Platform Web Applications

*Our professional development team is developing two types of Java Platform applications:*

- *Java Platform Web Applications*
- *Java Platform Desktop Applications.*

*The range of solutions we developed for our customers is wide. While developing these projects we not only improved our Java development skill but also learned new technologies helping us to improve the quality of our products with each project.*

*Our company is Sun Partner Advantage Member. This partnership gives us a benefit of accessing the most recent products and services offered by Sun Microsystems quicker than any regular player on IT market. We also have an opportunity to participate in various Sun certification programs, building up our skills in Java Platform development.*

*Below you can see the descriptions of some of our Java Platform web applications.*

# BusinessHelper

We have been contacted by one small company that requested us to develop the program, capable to transfer the company's financial data from its Access database to the online database, accessible via Internet interface, and enabling database operators to submit new data to the Internet interface from different remote locations. Also this program had to be integrated with ThinkMap, professional tool for visualization of various complex data. The project is still in development since during its life-time the clients requested and keep requesting more and more features to implement in this application. At the present it became a powerful financial tool helping its customers to identify investment opportunities, to better manage risk, and to make strategic business decisions.

## Project's Features

The following features were implemented in this software:

- *User types*

At the present there are three types of users, who can work with this application:

**Administrator** can manage user accounts and data, stored on our server.

**Database operator** submits data to third-party server.

**Registered user** is able to create search queries, stored on our server, and input financial data, accessible only to this particular user.

- *Online Database*

In this program we implemented the feature enabling database operators to submit new data to online database directly from the remote location.

- *Online Search*

Using online search, user is capable of finding any financial articles, mentioning particular company that is a query of the search, published by various news agencies in the Internet.

- *Retrieving financial data from EDGAR*

This feature enables the program to automatically retrieve data from the largest online database of numerous registered American companies, called EDGAR (<http://www.sec.gov/edgar.shtml>).

- *Implementing ThinkMap*

From the very beginning we have worked on the integration between our application and ThinkMap program ([www.thinkmap.com](http://www.thinkmap.com)) in order to visualize data received from the company's Access database and database operators. The data visualization enables program user to see business connections between various companies, which data was submitted to program's database, more clearly.



Picture 1. Business Helper Interface

## Technologies

- The Java Platform
- PHP
- Postgre database
- SQL

project\_\_\_\_\_

## Promobilize

Promobilize is a service that allows a provider of goods or services to respond with an offer to a mobile phone user's request. Promobilize also allows a seller to initiate an outbound offer campaign to opt-in mobile phone users.

Promobilize service can be used in many ways:

- to send useful information as a response to incoming messages;
- to send messages to all registered mobile phone users in adjusted time;
- to remind mobile phone user to do something.

### Project's Features

The following features were implemented in this software:

- Add users (service managers)
- Add/edit providers (offers managers)
- Add/edit offers (offer is an entity which defines
- Add/edit outbound promotions
- View mobile activity of the provider
- View a list of opt-in phones.

service behavior; it contains a keyword, the text which will be sent to the users as a response to their requests, etc.)

### Technologies

- mBlox API
- JSP
- JMS
- J2EE
- Hibernate
- XML
- Jboss
- MySQL
- HTML

project\_\_\_\_\_

## Internet Checkers

This program is classic online checkers game room. Most of us know this game since our childhood, but even when we grew up, we still having fun when play it from time to time. The best and easiest way to increase your website auditory is to fill the website with simple but fun games most of us know for ages.

The game belongs to our company, this means that we can offer it to you and further customize it specifically to your requirements.

### Project's Features

The following features were already implemented in this application:

- Player registration
- Game room with ability to add games
- Ability to invite other players
- Joining the open games
- Chatting during the game
- Full control of the rules in the applet
- The version of the checkers is an international version with a 10x10 board.



Picture 2. Checkers Interface

### Technologies

- The Java Platform
- Perl

project\_\_\_\_\_

## Appointment Maker

This application we are developing for one company that provides cosmetic services to its client. It enables company's clients and service providers to compile appointments for both parties. Besides scheduling, the application asks to confirm compiled schedule and notifies users about upcoming appointments via email and SMS.

### Project's Features

The following features were implemented in Appointment Maker:

- Multi-user level availability
- Schedule compilation
- Schedule editing
- Schedule cancellation
- Online confirmation
- Notification via email
- Notification via SMS



Picture 3. Web Site Interface

### Technologies

- JVM: JDK1.5
- O/R Mapping, Database access: Hibernate 3.x
- IDE: eclipse 3.1 or 3.2
- Application Server: JBoss AS 4.0.4
- Database: MySQL 5.0

project\_\_\_\_\_

## Spades

This is a classic game of Spades. The effective way to make your website interesting for its users is to introduce couple of easy and fun games on it. Spades is the card game known to millions and the feature of online chat during the game makes it a meeting place for your website visitors looking not only for playmates but for friends as well.

This application, unlike most of our projects, is owned by our company enabling us to offer it and customize to anybody who is interested in attracting more visitors to his or her website. Customization provides infinite possibilities of improving the game just for your website by implementing new rules, features and design.

### Project's Features

The following basic features were implemented in the product:

- Online chat between players.
- User registration.
- Player is able to play with bots.

### Technologies

- SmartFoxServer (Java)
- Flash
- MySQL



Picture 4. Spades Interface

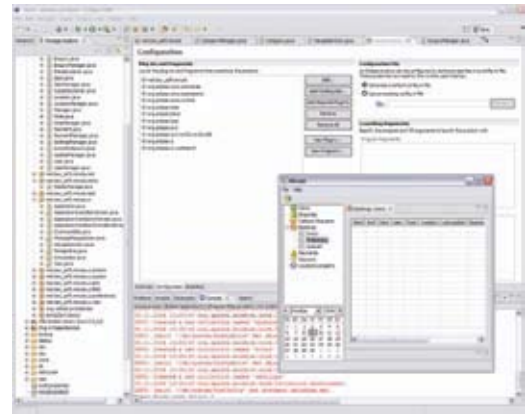
project\_\_\_\_\_

## Minute Calendar One

This application is a website where leasing companies offer their services of renting or leasing their property. The application creates booking schedules, lists of rentals, order placements, and etc.

### Technologies

- Server technology: PHP, MySQL.
- Client's technology: The Java Platform (Eclipse widgets).
- Eclipse SWT



Picture 5. Application Interface

project\_\_\_\_\_

## Pentaho

This web application was developed to monitor temperature of water running in pipelines constructed in blocks of buildings. Every pipeline system of each building was equipped with several sensors, two sensors for in/out and two sensors for hot and cold water.

The sensors are collecting data all the time and user-friendly graphical interface displays collected statistics, graphics and pipeline system to administrator. All prepared reports are user-friendly designed, so user is able to make notes regarding accumulated data.

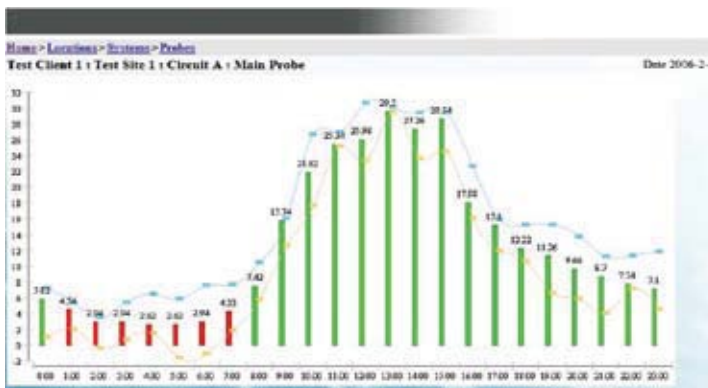


Figure 1

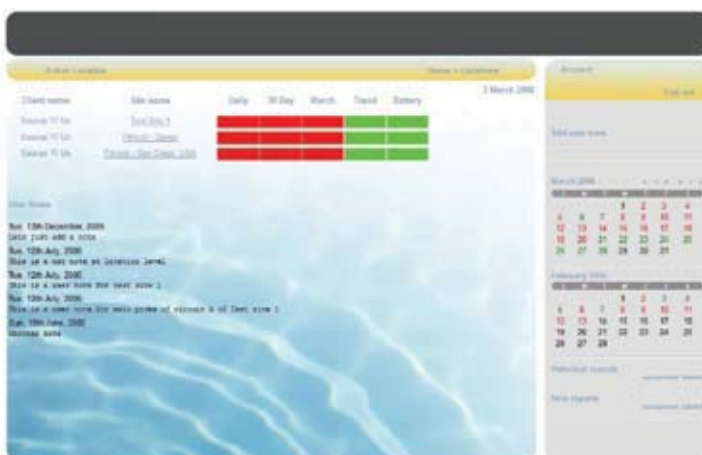


Figure 2

As you can see on the screenshot above (Figure 1), our program provides its user with graphic of water temperature changes (minimal, maximum and average temperatures) occurring in a set time period.

User can see the log, maintained by pipeline workers, who service pipe networks, monitored by the program, as well as water temperature deviations from its average value (red – deviation from average, green – average norm). The calendar to the right of the main screen indicates on what days the temperatures was within average, and when it was lower or higher than average.

There are several representations of temperature charts in the program. Chart above displays temperature variations, displayed on Figure 1, in different representation.



Figure 3

Program is also displays the schemas of pipeline networks, monitored by the program.

There are two types of users in the program:

- Administrators
- Users

Administrator is able to manage the following:

- Users
- Sites
- Systems
- KPIs

## Project's Features

The following features were implemented in the product:

- Two user types (administrator, user)
- Logs
- Life demo of working pipeline networks

## Technologies

- Pentaho Birt
- Pentaho
- The Java Platform

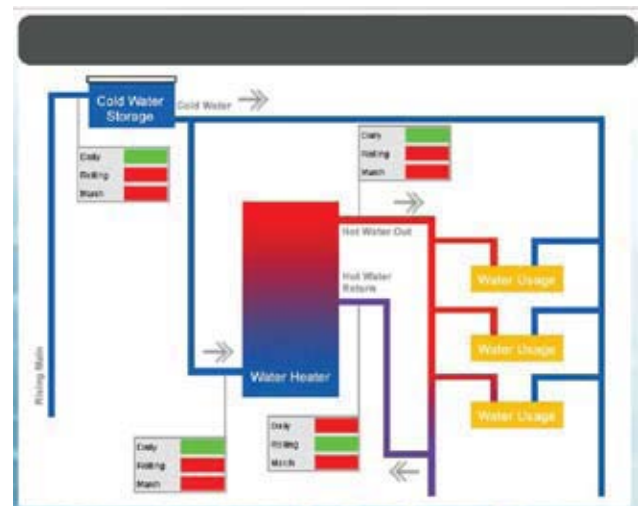


Figure 4



Figure 5